

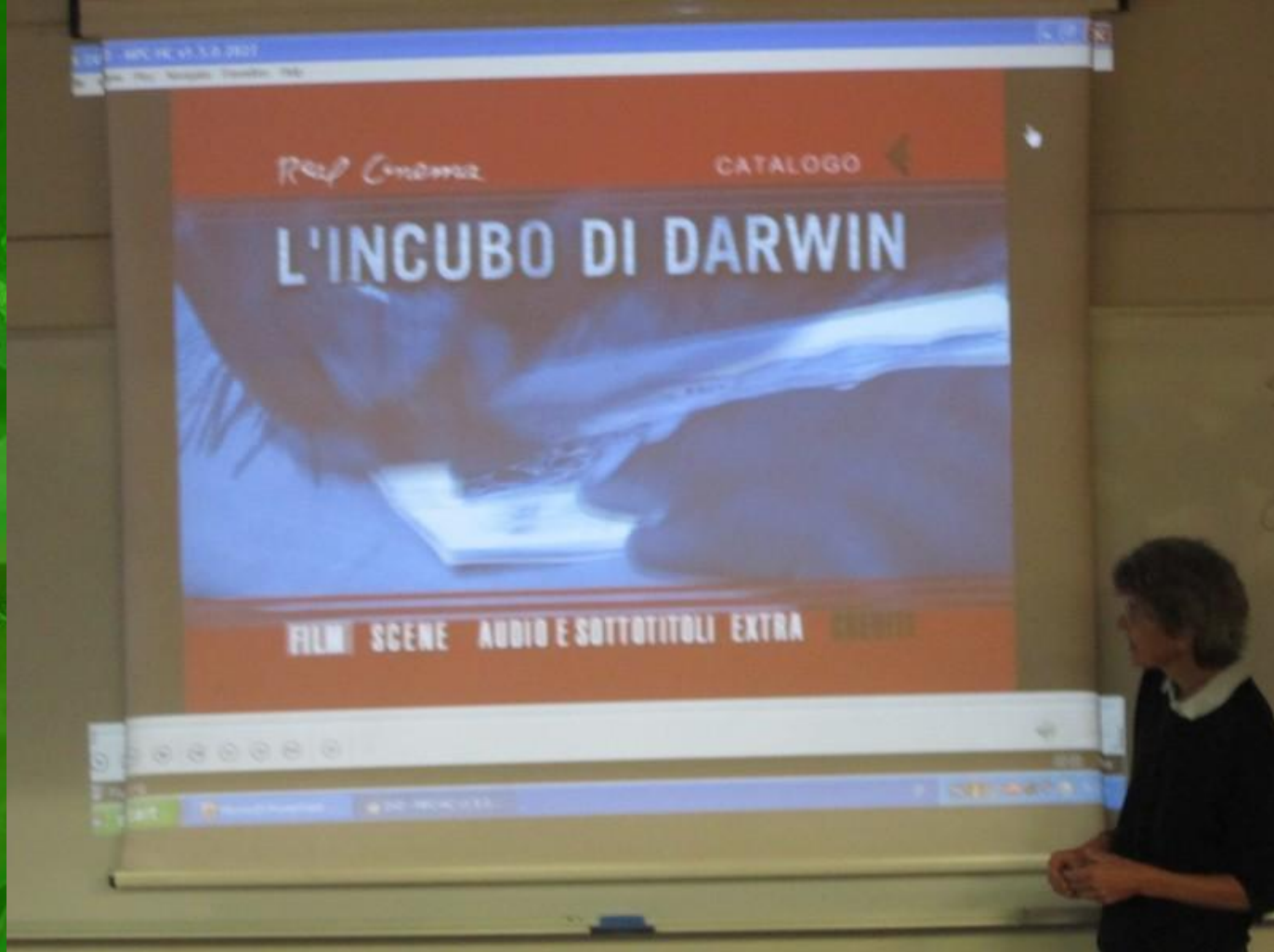
The background of the slide is a dense, close-up photograph of green leaves and flowers, likely from a plant like a clover or alfalfa, which are common in agriculture. The colors are various shades of green, from light to dark, creating a textured and naturalistic backdrop.

INTENSIVE AGRICULTURE AND LIVESTOCK FARMING: CONSEQUENCES ON OUR LIFE AND WORLD

APE – ITIS PININFARINA

On 22nd November 2011, Prof.ssa Elena Camino - University of Turin, Faculty of Natural Sciences - taught our students interesting aspects linked to intensive agriculture and livestock farming in comparison to sustainable farming and the negative aspects for our environment and our future life. The 2-hour debate included role-play and discussions arising from visual and verbal stimuli.





Furthermore, scenes from the film "Darwin's nightmare" were shown: the film shows how the introduction of a predator fish , the Nile Perch, in the Tanzanian Victoria Lake has changed the eco-system and negatively influenced man's life, in favour of an irresponsible development dominated by economic interests.



NILE PERCH

From:
http://en.wikipedia.org/wiki/File:Lates_niloticus_2.jpg

Prof.ssa Camino made the students think on the difference between "Safe" Agriculture and "Sovereign" agriculture, and on the concept that our society has been defined "Oil-eaters". Please read our pdf.file "food_agriculture_environment" for further information.





T H A N K
Y O U,
E L E N A!